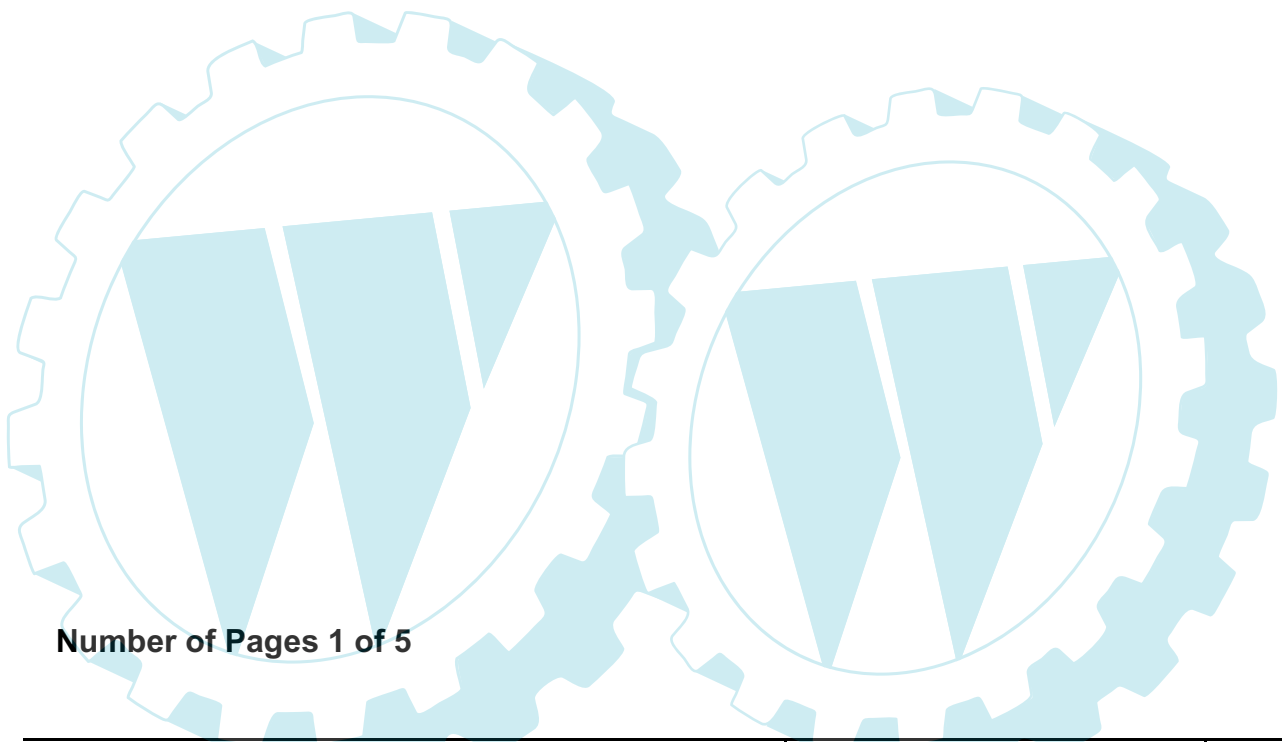


**ELECTROLUX OUTDOOR PRODUCTS**

| <b>PNC</b> | <b>Type/Prefix/nd</b> | <b>Model</b> | <b>Brand</b> |
|------------|-----------------------|--------------|--------------|
| 953900350  | 02                    | B 321        | PARTNER      |



Number of Pages 1 of 5

|   |                             |
|---|-----------------------------|
| <b>Factory:</b> IIQ - Valmadrera              | <b>Product Group:</b> OP 93 |
| <b>Publication Number:</b> EIPL2005_VP0508001 | <b>Petrol Portable</b>      |
| <b>Publication Date:</b> 22/08/05             | <b>Sub Group</b> 9433       |

 **The Electrolux Group. The world's No.1 choice.**

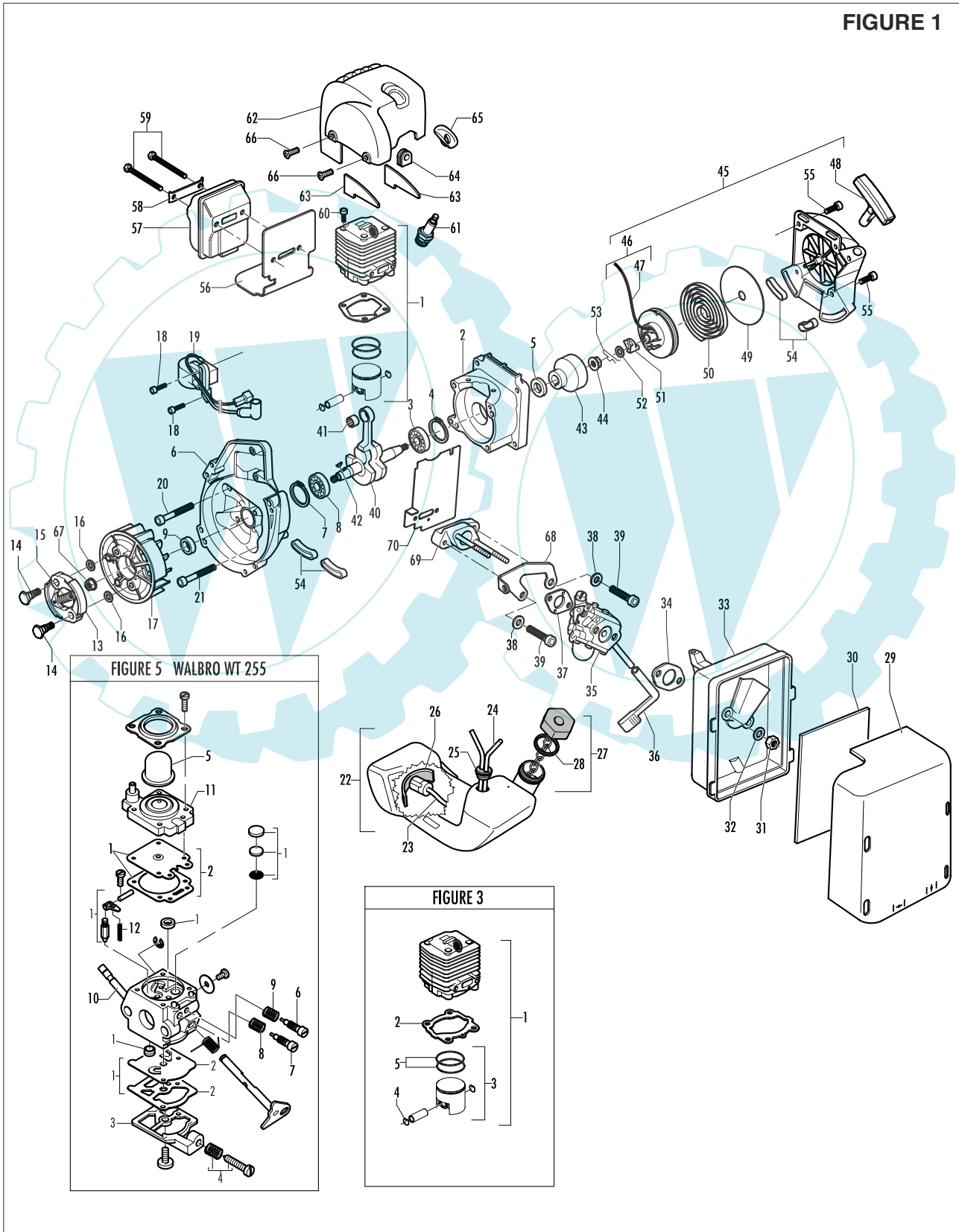
|       |                |
|-------|----------------|
| brand | <b>PARTNER</b> |
|-------|----------------|

|      |        |           |
|------|--------|-----------|
| date | JUL/03 | SHEET 1/4 |
|------|--------|-----------|

|              |        |
|--------------|--------|
| Model        | Prefix |
| <b>B 321</b> | 02     |
|              |        |
|              |        |

|                  |
|------------------|
| Product number   |
| <b>953900350</b> |
|                  |
|                  |

**FIGURE 1**



|       |                |
|-------|----------------|
| brand | <b>PARTNER</b> |
|-------|----------------|

|      |        |           |
|------|--------|-----------|
| date | JUL/03 | SHEET 2/4 |
|------|--------|-----------|

|              |           |
|--------------|-----------|
| Model        | Prefix    |
| <b>B 321</b> | <b>02</b> |
|              |           |
|              |           |

|                  |
|------------------|
| Product number   |
| <b>953900350</b> |
|                  |
|                  |

**FIGURE 1**

| pos  | P/N McC         | P/N ELX   | Qty | DESCRIPTION                 |
|------|-----------------|-----------|-----|-----------------------------|
| 9    | <b>FIGURE 3</b> |           |     |                             |
| 2    | 247936          | 538247936 | 1   | crankcase kit (starter)     |
| 3    | • 235900        | 538235900 | 1   | ball bearing 6002 15/32/9   |
| 4    | • 235899        | 538235899 | 1   | seeger ring                 |
| C 5  | • 228872        | 538228872 | 1   | seal 13-32-5 (S7)           |
| 6    | 247935          | 538247935 | 1   | crankcase kit (Flywheel)    |
| 7    | • 235899        | 538235899 | 1   | seeger ring                 |
| 8    | • 235900        | 538235900 | 1   | ball bearing 6002 15/32/9   |
| C 9  | • 228872        | 538228872 | 1   | seal 13-32-5 (S7)           |
| B 13 | 247937          | 538247937 | 1   | clutch assy                 |
| 14   | • 241269        | 538241269 | 2   | pin                         |
| C 15 | • 241270        | 538241270 | 1   | clutch spring elite         |
| 16   | • 236956        | 538236956 | 2   | washer                      |
| 17   | 241240          | 538241240 | 1   | flywheel                    |
| 18   | 235806          | 538235806 | 2   | screw M5 X 20 TCE           |
| C 19 | 241298          | 538241298 | 1   | ignition coil               |
| 20   | 235808          | 538235808 | 2   | screw M 5x50                |
| 21   | 235804          | 538235804 | 2   | screw M5 X 30 TCE           |
| C 22 | 241541          | 538241541 | 1   | tank mix ass.               |
| B 23 | • 229809        | 538229809 | 1   | hose-fuel mm245             |
| B 24 | • 229743        | 538229743 | 1   | hose fuel mm150             |
| C 25 | • 235675        | 538235675 | 1   | fuel tank grommet           |
| A 26 | 240452          | 538240452 | 1   | pick up fuel                |
| B 27 | 236563          | 538236563 | 1   | fuel cap ass'y              |
| A 28 | • 236564        | 538236564 | 1   | cap gasket                  |
| 29   | 242711          | 538242711 | 1   | air filter cover            |
| B 30 | 241523          | 538241523 | 1   | air filter                  |
| 31   | 235642          | 538235642 | 2   | nut M5                      |
| 32   | 235248          | 538235248 | 2   | washer                      |
| 33   | 237452          | 538237452 | 1   | box air filter              |
| A 34 | 227417          | 538227417 | 1   | gasket                      |
| C 35 | <b>FIGURE 5</b> |           |     |                             |
| 36   | 227255          | 538227255 | 1   | knob-choke                  |
| A 37 | 227692          | 538227692 | 1   | gasket                      |
| 38   | 235248          | 538235248 | 2   | washer                      |
| 39   | 235803          | 538235803 | 2   | screw M5 X 25 TCE           |
| 40   | 241266          | 538241266 | 1   | crankshaft assembly         |
| C 41 | • 235742        | 538235742 | 1   | needle bearing Ø 9x14x12 mm |
| C 42 | 227631          | 538227631 | 1   | key                         |
| 43   | 241223          | 538241223 | 1   | starter hub                 |
| 44   | 235218          | 538235218 | 1   | nut M8                      |
| C 45 | 241659          | 538241659 | 1   | starter assembly            |
| B 46 | • 227194        | 538227194 | 1   | drum/rope                   |
| A 47 | •• 227703       | 538227703 | 1   | rope                        |
| 48   | • 240884        | 538240884 | 1   | starter-handle              |

| pos  | P/N McC  | P/N ELX   | Qty | DESCRIPTION             |
|------|----------|-----------|-----|-------------------------|
| 49   | • 227467 | 538227467 | 1   | shield spring           |
| B 50 | • 227300 | 538227300 | 1   | spring rewind           |
| B 51 | • 240492 | 538240492 | 1   | starter pawl            |
| 52   | • 227470 | 538227470 | 1   | spacer-drum             |
| B 53 | • 240485 | 538240485 | 1   | spring                  |
| 54   | 241248   | 538241248 | 4   | grommet fuel tank elite |
| 55   | 236527   | 538236527 | 4   | screw TCE M6 X 16       |
| C 56 | 241280   | 538241280 | 1   | gasket muffler          |
| C 57 | 241432   | 538241432 | 1   | muffler assy elite      |
| 58   | • 227236 | 538227236 | 1   | clamp                   |
| 59   | • 227274 | 538227274 | 2   | screw M5X60             |
| 60   | 227565   | 538227565 | 4   | screw M5X25             |
| A 61 | 92879    | 538092879 | 1   | spark plug RDJ8J        |
| 62   | 242706   | 538242706 | 1   | engine cover            |
| 63   | 241416   | 538241416 | 2   | eng. cover gasket       |
| 64   | 236322   | 538236322 | 1   | grommet                 |
| 65   | 241241   | 538241241 | 1   | cap                     |
| 66   | 240688   | 538240688 | 2   | screw + washer M5X14    |
| 67   | 235218   | 538235218 | 1   | nut M8                  |
| 68   | 241522   | 538241522 | 1   | plate                   |
| C 69 | 241434   | 538241434 | 1   | carb spacer             |
| C 70 | 227239   | 538227239 | 1   | gasket                  |

**FIGURE 3 34cc**

|     |        |           |   |                    |
|-----|--------|-----------|---|--------------------|
| C 1 | 247942 | 538247942 | 1 | cylinder/pist. Kit |
| B 2 | 227286 | 538227286 | 1 | gasket cyl.        |
| C 3 | 235799 | 538235799 | 1 | piston kit         |
| 4   | 235008 | 538235008 | 2 | ring snap int.     |
| B 5 | 235677 | 538235677 | 2 | ring 35 CC (1PC)   |

**FIGURE 5 WALBRO WT 255**

|      |           |           |   |                     |
|------|-----------|-----------|---|---------------------|
| C -  | 240048    | 538240048 | 1 | carburettor WT 255  |
| B 1  | • 229198  | 538229198 | 1 | K Repair Kit        |
| A 2  | •• 229191 | 538229191 | 1 | gasket+ diaph. Kit  |
| 3    | • 237480  | 538237480 | 1 | pump cover          |
| 4    | • 237481  | 538237481 | 1 | idle screw kit      |
| C 5  | • 237481  | 538237481 | 1 | idle screw kit      |
| 6    | • 237481  | 538237481 | 1 | idle screw kit      |
| 7    | • 246541  | 538246541 | 1 | idle needle         |
| 8    | • 229927  | 538229927 | 1 | spring needle       |
| 9    | • 229601  | 538229601 | 1 | spring needle       |
| 10   | • 225962  | 538225962 | 1 | choke shaft         |
| C 11 | • 246949  | 538246949 | 1 | primer bulb support |
| C 12 | • 246950  | 538246950 | 1 | spring              |

|                   |                 |                   |                    |
|-------------------|-----------------|-------------------|--------------------|
| A= ALTA ROTAZIONE | A=HIGH MOVING   | A=HAUTE DEMANDE   | A=GROBE NACHFRAGE  |
| B=MEDIA ROTAZIONE | B=MEDIUM MOVING | B=MOYENNE DEMANDE | B=MITTELMAEBIGE    |
| C=BASSA ROTAZIONE | C=SLOW MOVING   | C=BASSE DEMANDE   | C=WENIGE NACHFRAGE |

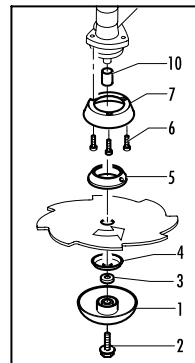
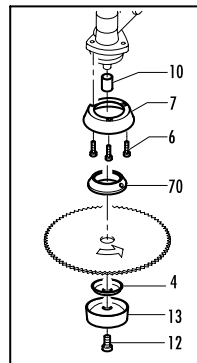
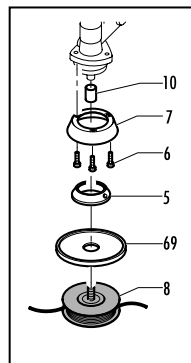
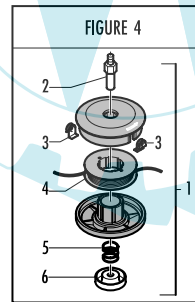
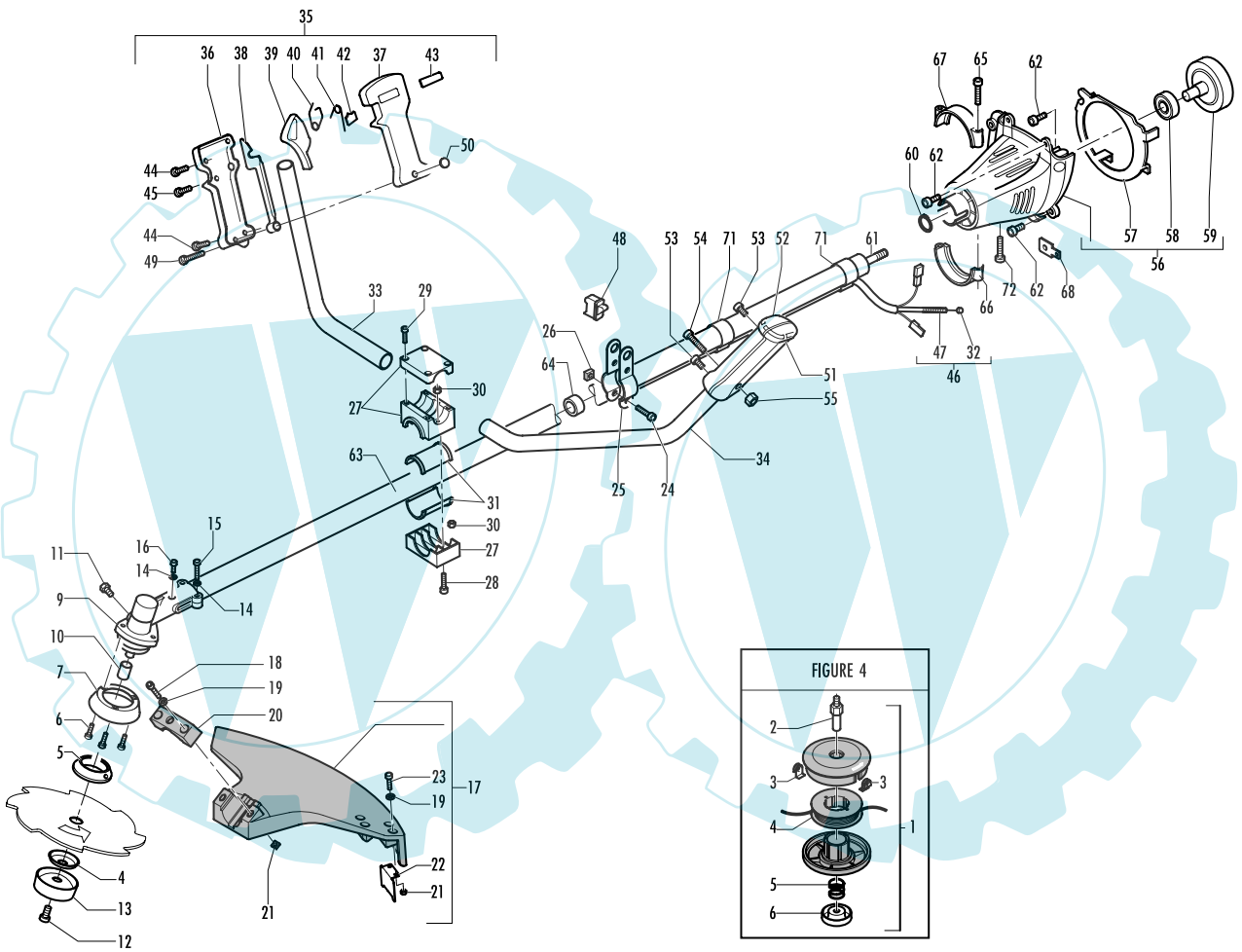
|       |                |
|-------|----------------|
| brand | <b>PARTNER</b> |
|-------|----------------|

|      |        |           |
|------|--------|-----------|
| date | JUL/03 | SHEET 3/4 |
|------|--------|-----------|

|              |        |
|--------------|--------|
| Model        | Prefix |
| <b>B 321</b> | 02     |
|              |        |
|              |        |

|                  |
|------------------|
| Product number   |
| <b>953900350</b> |
|                  |
|                  |

**FIGURE 2**



|       |                |
|-------|----------------|
| brand | <b>PARTNER</b> |
|-------|----------------|

|      |        |           |
|------|--------|-----------|
| date | JUL/03 | SHEET 4/4 |
|------|--------|-----------|

|              |           |
|--------------|-----------|
| Model        | Prefix    |
| <b>B 321</b> | <b>02</b> |
|              |           |
|              |           |

|                  |
|------------------|
| Product number   |
| <b>953900350</b> |
|                  |
|                  |

**FIGURE 2**

| pos  | P/N McC         | P/N ELX   | Qty | DESCRIPTION                |
|------|-----------------|-----------|-----|----------------------------|
| A 1  | 240809B         | 538240809 | 1   | free hub kit               |
| A 2  | • 240806        | 538240806 | 1   | pin                        |
| 3    | • 240807        | 538240807 | 1   | spacer                     |
| A 4  | 229834          | 538229834 | 1   | flange                     |
| A 5  | 229833          | 538229833 | 1   | flange                     |
| 6    | 240688          | 538240688 | 3   | screw + washer M5x14       |
| B 7  | 240767          | 538240767 | 1   | flange guard               |
| A 8  | <b>FIGURE 4</b> |           |     |                            |
| 9    | 241426          | 538241426 | 1   | gear box                   |
| 10   | • 247272        | 538247272 | 1   | spacer                     |
| 11   | • 240151        | 538240151 | 1   | screw                      |
| A 12 | 229842          | 538229842 | 1   | screw blade M10x16         |
| A 13 | 236596          | 538236596 | 1   | cup-idle d.10              |
| 14   | 236529          | 538236529 | 3   | split washer               |
| 15   | 235804          | 538235804 | 2   | screw M5 X 30 TCE          |
| 16   | 236381          | 538236381 | 1   | screw TCE M5 X 10          |
| B 17 | 247208          | 538247208 | 1   | kit protection string head |
| 18   | • 235806        | 538235806 | 2   | screw M5 X 20 TCE          |
| 19   | • 235248        | 538235248 | 4   | washer M5                  |
| 20   | • 240931        | 538240931 | 1   | clamp protector D 25       |
| 21   | • 236732        | 538236732 | 4   | nut M5                     |
| 22   | • 241973        | 538241973 | 1   | cutler                     |
| 23   | • 235802        | 538235802 | 2   | screw M5 X 14 TCE          |
| 24   | 235911          | 538235911 | 2   | screw TCE M6 X 12          |
| 25   | 228152          | 538228152 | 2   | half hook D.25             |
| 26   | 236642          | 538236642 | 2   | nut M6                     |
| 27   | 241685          | 538241685 | 1   | handle clamp assy D25      |
| 28   | • 235921        | 538235921 | 2   | screw TCE M6 X 30          |
| 29   | • 236558        | 538236558 | 4   | screw TCE M6 X 40          |
| 30   | • 235912        | 538235912 | 6   | nut M6                     |
| 31   | • 241684        | 538241684 | 2   | half bearing               |
| 32   | 235912          | 538235912 | 1   | nut M6                     |
| 33   | 229831          | 538229831 | 1   | right handle bar           |
| 34   | 229832          | 538229832 | 1   | left handle bar            |
| 35   | 241542          | 538241542 | 1   | trigger assy               |
| 36   | • 241293        | 538241293 | 1   | box lever right E 3100     |
| 37   | • 241294        | 538241294 | 1   | lever box                  |
| 38   | • 229820        | 538229820 | 1   | trigger safety             |
| 39   | • 241295        | 538241295 | 1   | gas lever E 3100           |
| 40   | • 240091        | 538240091 | 1   | trigger spring             |
| 41   | • 229973        | 538229973 | 1   | spring trigger             |
| 42   | • 229823        | 538229823 | 1   | button-throttle            |

| pos  | P/N McC   | P/N ELX   | Qty | DESCRIPTION               |
|------|-----------|-----------|-----|---------------------------|
| 43   | • 229824  | 538229824 | 1   | slide throttle cable      |
| 44   | • 240618  | 538240618 | 2   | screw 3 X 16              |
| 45   | • 240833  | 538240833 | 3   | tapping screw 3x20        |
| C 46 | • 241528  | 538241528 | 1   | cables elect./gas assy    |
| C 47 | •• 241529 | 538241529 | 1   | gas cable                 |
| C 48 | •• 236394 | 538236394 | 1   | switch                    |
| 49   | 235804    | 538235804 | 1   | screw M5 X 30 TCE         |
| 50   | 235216    | 538235216 | 1   | nut M5                    |
| 51   | 229984    | 538229984 | 1   | left half of left handle  |
| 52   | 229985    | 538229985 | 1   | right/half of left handle |
| 53   | 240833    | 538240833 | 2   | tapping screw 3x20        |
| 54   | 235212    | 538235212 | 1   | screw                     |
| 55   | 235216    | 538235216 | 1   | nut M5                    |
| 56   | 242233    | 538242233 | 1   | ass. mount                |
| 57   | • 242398  | 538242398 | 1   | diaphragm                 |
| 58   | • 235918  | 538235918 | 1   | ball bearing              |
| 59   | • 227284  | 538227284 | 1   | drum clutch               |
| 60   | • 236378  | 538236378 | 1   | snap ring                 |
| 61   | 228109    | 538228109 | 1   | transmiss.shaft SM26      |
| 62   | 235806    | 538235806 | 4   | screw M5 X 20 TCE         |
| 63   | 242442    | 538242442 | 1   | shaft-outer D25 L1489     |
| 64   | • 228192  | 538228192 | 5   | bushing assy d.25mm.      |
| 65   | 225472    | 538225472 | 1   | clamp upper               |
| 66   | 225473    | 538225473 | 1   | lower clamp               |
| 67   | 235804    | 538235804 | 2   | screw M5 X 30 TCE         |
| 68   | 228139    | 538228139 | 1   | contact wire              |
| 69   | 241155    | 538241155 | 1   | string head shield        |
| 70   | 240936    | 538240936 | 1   | flange                    |
| 71   | 229850    | 538229850 | 2   | ring D.25                 |
| 72   | 235802    | 538235802 | 1   | screw M5 X 14 TCE         |

**FIGURE 4**

|     |             |           |   |                      |
|-----|-------------|-----------|---|----------------------|
| A 1 | 538248302   | 538248302 |   | string head male M10 |
| 2   | • 240850    | 538240850 | 1 | pin                  |
| B 3 | • 241154    | 538241154 | 2 | eyelet               |
| B 4 | • 538248303 | 538248303 | 1 | spool line           |
| 5   | • 240852    | 538240852 | 1 | spring               |
| C 6 | • 241153    | 538241153 | 1 | nut                  |

A= ALTA ROTAZIONE  
B=MEDIA ROTAZIONE  
C=BASSA ROTAZIONE

A=HIGH MOVING  
B=MEDIUM MOVING  
C=SLOW MOVING

A=HAUTE DEMANDE  
B=MOYENNE DEMANDE  
C=BASSE DEMANDE

A=GROÙE NACHFRAGE  
B=MITTELMAEÙIGE  
C=WENIGE NACHFRAGE